



## GT55 TB GROUND FLOOR TREATMENT SYSTEM

A versatile and flexible solution for a range of applications including shop fronts, entrances and ground floor framing the GT55 TB aluminium ground floor treatment system has been designed to offer high levels of performance through thermally broken screening. The system also includes an integrated range of high-traffic, anti-finger trap doors suitable for single storey applications.

### DESIGN FEATURES

- Pocket or Bead glazed for ease of site glazing
- 110mm frame depth to accommodate varying types of applications
- Slim 55mm profile width for increased glazing and light transmission
- Ladder frame construction to enable fast on-site installation
- Fully compatible with other AluK systems
- Mullion drainage options
- Wide glazing pocket for easy site glazing

### OPTIONS

- Can accommodate 6mm - 32mm sealed units for thermal and acoustic performance
- Wide range of hardware available offering full customisation
- Available in single or dual colour option, polyester powder coating and anodised finishes

### CONFIGURATIONS

- Flexible design allows GT55 TB to be tailored to suit your project needs
- Integration with glazed screens and doorsets
- Used as a ladder frame format for easy on site installation and factory assembly



## GT55 TB GROUND FLOOR TREATMENT SYSTEM TECHNICAL SPECIFICATIONS

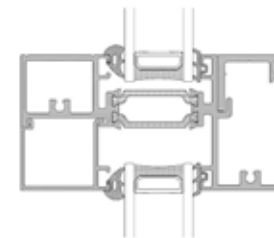
Providing high levels of thermal performance, the GT55 TB aluminium ground floor treatment system has been designed in a ladder frame construction to provide a flexible solution

for low rise glazing applications and can be integrated with other AluK systems. Sealed units of 6mm up to 32mm can be accommodated to improve thermal and acoustic performance.

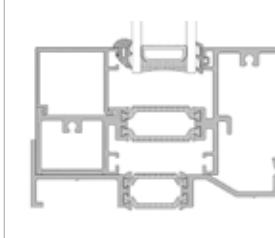
SPECIFICATIONS	THERMALLY BROKEN SYSTEM
<b>Performance &amp; Accreditation</b>	
U-Value (Double Glazing)*	1.4 W/m <sup>2</sup> K
U-Value (Triple Glazing)**	--
Green Guide Rating	C Rated
Acoustic Performance (dB)	npd
Air Tightness (Pa)	Class 4
Water Tightness (Pa)	Class 5A
Wind Load (Pa)	Class 5
Security	npd
<b>Configurations</b>	
Opening	--
Top Hung	•
Side Hung	•
Fixed Light	•
Tilt & Turn	--
Single Door	--
Double Door	--
Sliding Door	--
<b>Design Features</b>	
Max Vent Weight	--
Top Hung	180 Kg
Side Hung	55 Kg
Fixed Light	200 Kg
Tilt & Turn	100 Kg
<b>Size Limits</b>	
Frame Options	110mm
Dual Colour Option	•
Single Point Locking	•
Multi-Point Locking	--
Electro Mechanical Locking	•
Glazing Options	Pocket Glazed
Glazing Thickness	6mm - 32mm

## CAD CROSS SECTION AND THERMAL PROFILE

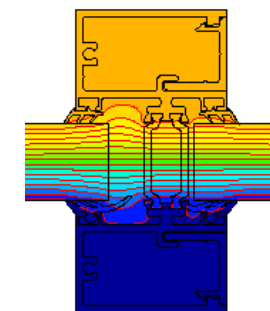
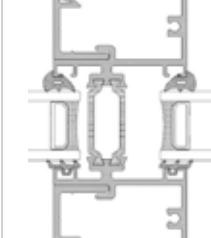
Transom Detail



Cill Detail



Mullion Detail



\* Screen U-Values based on CEN size windows (1230mm x 1480mm) using 1.1 W/m<sup>2</sup>K double glazing with warm edge Swisspacer V bar. Sound insulation values are Rw reduction values and are based on tests using acoustic glazing.

Please note: NBS Specifications are available for all products and BIM Components for many. Please visit [www.aluk.co.uk](http://www.aluk.co.uk) to download CAD files, BIM Components and NBS Specifications.